

TOTALAND

The World's Most Advanced Field Land Management System



TotalLand, the Landman's Virtual Office,

eliminates paperwork

and allows field landmen to produce, document, and share work effortlessly.

TotalLand delivers control, consistency, and cost-effectiveness in a secure and easy-to-use package.



- ▶ Cost Effective for Any Size Office
- ▶ Real Time Contracts and Reports
- ▶ Fully Integrated On-Line Database
- ▶ Real Time Image and File Sharing
- ▶ Data Driven, On-line GIS Mapping



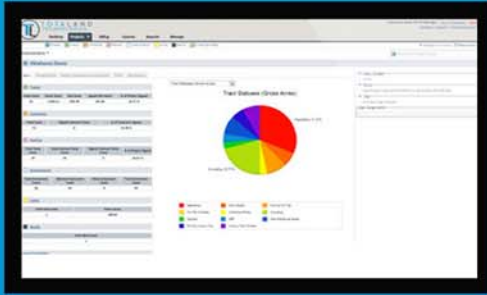
- ▶ TotalLand runs on Any Device from iPhones to Androids
- ▶ Patented Blink™ Technology
- ▶ Affordable Monthly Leasing
- ▶ No Per-User Cost
- ▶ GIS Plats on Demand
- ▶ Secure and Reliable



TOTALAND
TECHNOLOGIES

Free Trial
www.totaland.com
800.465.5877
info@totaland.com

Revolutionary Patent-Pending Architecture



TotalLand eliminates the negative aspects of both tract-based and lease-based systems by using a unique, patent-pending tables structure that eliminates the need for repeated data. This allows you to quickly find and access only the information you really need.

Data Driven On-line GIS Mapping

One of TotalLand's powerful features includes an online version of project maps. TotalLand links maps to your project's data, and a map's symbology can then be controlled by that data. TotalLand's unique **table structure allows you to access any information** attached to the tract – such as parties, contracts, images, statistics, etc. – all through the online map. TotalLand creates multiple dynamic layers that are each symbolized with information relevant to that particular layer. Each base map is built specifically to suit your needs, and once **a polygon is built and linked, it never has to be** addressed again unless its shape changes.

► **No Per-User Cost**

► **Affordable Monthly License**



Abstract Assembler

TotalLand's patent-pending Abstract Assembler takes the instrument records

contained in a project and gives you the ability to compile those instruments into a secure PDF file for printing or forwarding directly to a title attorney for examination.

The completed abstract file includes a cover sheet with the brokerage logo, a caption page, a table of contents, an index with page numbering done automatically and miscellaneous images such as disclaimers and tax certificates.



Contract Generator

In TotalLand, "contract" refers to OGMLs, seismic permits, pipeline rights-of-way and similar documents. From a data standpoint, a contract contains critical information linked to tracts and parties as necessary, and even to instruments, **units and wells**. After your information is entered and linked, you're just a

click away from creating a PDF document that can be printed, executed and shared. Since the document was generated from your data, the LPR or other form of contract report can be generated instantly as well. You can even provide your client with data and images related to your project(s) with ease.

Broker and Client Billing

Broker and client billing is a tedious reality of business, leading to slow processing, unnecessary overhead, and even missed billing opportunities. With TotalLand, brokers can do their billing in a snap. Brokers quickly complete the daily billing items, attach scans of receipts if **necessary and submit their invoices online.**



TOTALAND
TECHNOLOGIES

TotalLand does *way* more than we could ever describe in a brochure. **Start your FREE Trial and see for yourself.** www.totaland.com